

**Tillbridge Solar Project
EN010142**

**Volume 6
Environmental Statement**

**Figure 12-1: Initial Site Appraisal Plan
(originally issued June 2022)
Document Reference: EN010142/APP/6.3**

**Regulation 5(2)(a)
Infrastructure Planning (Applications: Prescribed Forms and
Procedure) Regulations 2009**

**April 2024
Revision Number: 00**

tillbridgesolar.com

LEGEND

- 'Higher risk' areas: little or no opportunity for development without extensive mitigation. Constraints include planning designations, collective open views from settlements and setting of listed buildings.
- 'Medium risk' areas: development will likely require micro-siting and/or higher levels of mitigation. Constraints open private residential views; sensitive elevated topography and proximity to Public Rights of Way or roads with amenity value.
- 'Lower risk' areas: greater capacity for development due to absence of sensitive receptors and landscape/visual constraints.
- Areas of highest sensitivity to cumulative effects with Cottam solar farm: stand-offs to be considered
- Open views from residential receptors (based on assumptions from aerial mapping and site surveys)
- 'Important views' noted in Ingham Neighbourhood Plan
- W** Areas with higher opportunities for woodland planting to assist with screening and improve/connect biodiversity/green infrastructure
- Broad corridors where improved recreational routes may be of greatest benefit (permissive paths/brideways or PRoW)

NOTES

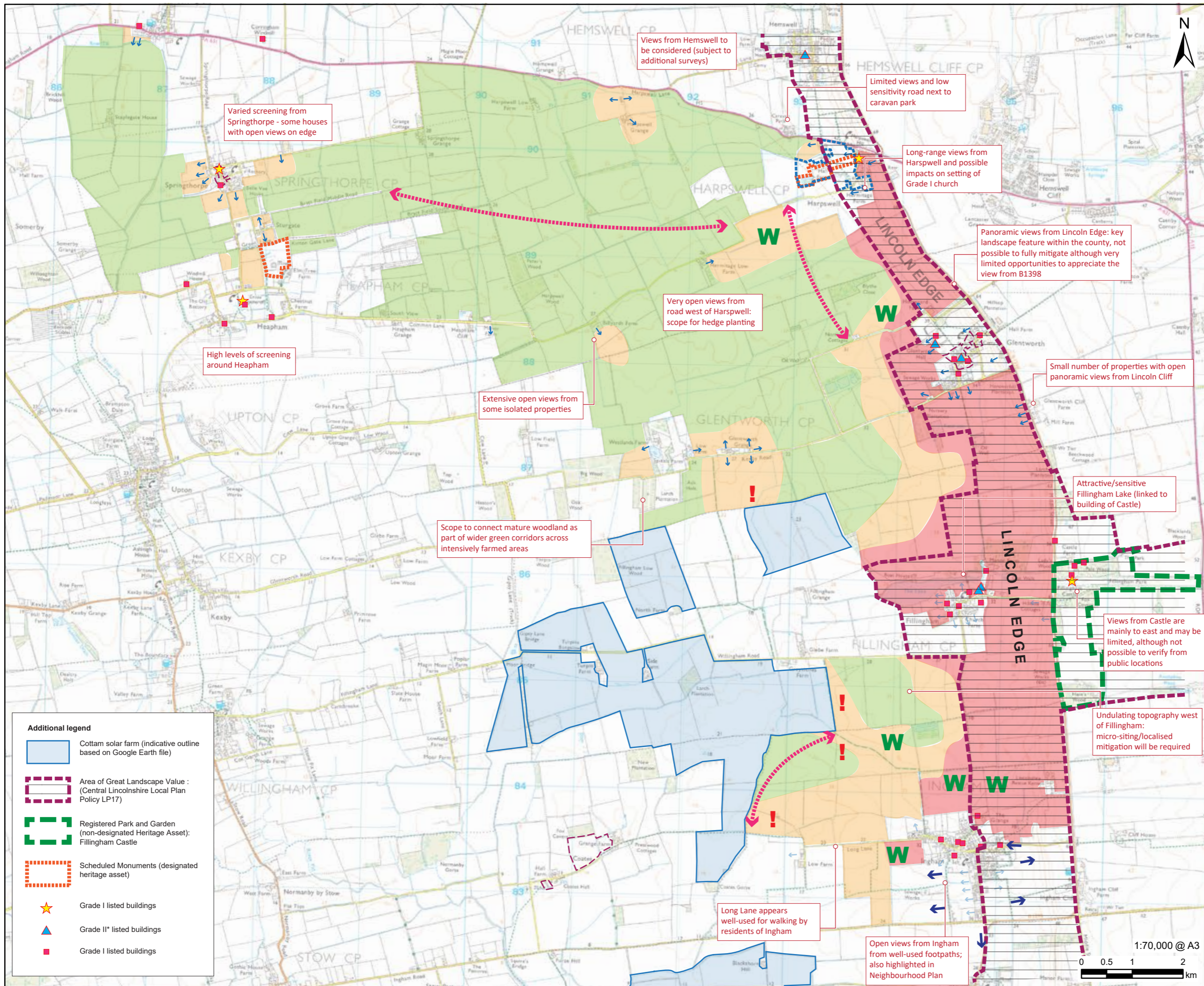
Contains Ordnance Survey Data © Crown Copyright and database right 2024. © Crown copyright and database rights 2024. Ordnance Survey 0100031673.

ISSUE PURPOSE

DCO Submission
PROJECT NUMBER
60677969

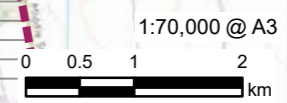
FIGURE TITLE
Initial Site Appraisal Plan
(originally issued June 2022)

FIGURE NUMBER
Figure 12-1



Additional legend

- Cottam solar farm (indicative outline based on Google Earth file)
- Area of Great Landscape Value : (Central Lincolnshire Local Plan Policy LP17)
- Registered Park and Garden (non-designated Heritage Asset): Fillingham Castle
- Scheduled Monuments (designated heritage asset)
- Grade I listed buildings
- Grade II* listed buildings
- Grade I listed buildings



This drawing has been prepared for the use of AECOM's client. It may not be used, modified, reproduced or relied upon by third parties, except as agreed by AECOM or as required by law. AECOM accepts no responsibility, and denies any liability whatsoever, to any party that uses or relies on this drawing without AECOM's express written consent. Do not scale this document. All measurements must be obtained from the stated dimensions.